



# cereneo Vitznau



The clinic is connected to the Park Hotel Vitznau, one of Switzerland's most prestigious 5-star hotels, located in the Swiss Alps on the shores of Lake Lucerne. Every room is bright, elegantly furnished, and barrier-free. We understand the vital role that family plays in the recovery process and, as such, offer accommodation for all family members when needed.

# Room categories

**Medical  
Junior Suite**



**Medical  
Suite**



**Medical  
Residence**

**38 m<sup>2</sup>**  
**Double occupancy\***  
**Lake view**



# Medical Junior Suite 01

- Two single beds
- Bathroom with shower and toilette (barrier-free, with grab rail)
- Shower and care products
- Walk-in closet with safe
- Living area with sofa and TV
- Dining area
- Coffee machine and kettle



\*Double occupancy: space for one accompanying person

**38 m<sup>2</sup>**  
**Double occupancy\***  
**Lake view**



# Medical Junior Suite 02

- Two single beds
- Bathroom with shower and toilette (barrier-free, with grab rail)
- Shower and care products
- Walk-in closet with safe
- Living area with sofa and TV
- Dining area
- Coffee machine and kettle



\*Double occupancy: space for one accompanying person

**38 m<sup>2</sup>**  
**Double occupancy\***  
**Lake view**



# Medical Junior Suite 03

- Two single beds
- Bathroom with shower and toilette (barrier-free, with grab rail)
- Shower and care products
- Walk-in closet with safe
- Living area with sofa and TV
- Dining area
- Coffee machine and kettle



\*Double occupancy: space for one accompanying person

**38 m<sup>2</sup>**  
**Double occupancy\***  
**Lake view**



# Medical Junior Suite 04

- Two single beds
- Bathroom with shower and toilette (barrier-free, with grab rail)
- Shower and care products
- Walk-in closet with safe
- Living area with sofa and TV
- Dining area
- Coffee machine and kettle



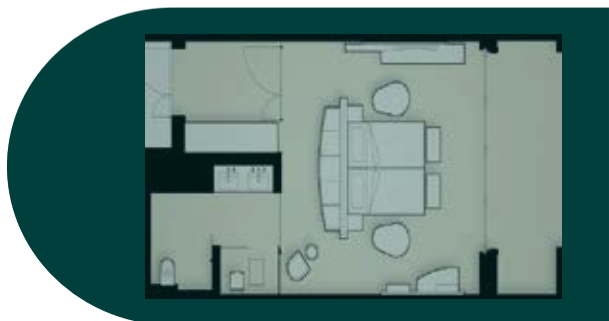
\*Double occupancy: space for one accompanying person

**38 m<sup>2</sup>**  
**Double occupancy\***  
**Lake view**



# Medical Junior Suite 05

- One double bed
- Bathroom with shower and toilette (barrier-free, with grab rail)
- Shower and care products
- Closet with safe
- Living area with sofa and TV
- Coffee machine and kettle
- Balcony with table and chairs 9 m<sup>2</sup>



\*Double occupancy: space for one accompanying person

89 m<sup>2</sup>  
Double occupancy\*  
Lake view



# Medical Suite 06

## Bedroom

- Sleeping area with double bed and TV
- Bathroom with bathtub, shower and toilette (barrier-free, with grab rail)
- Shower and care products

## Living room

- Living area with large sofa and TV
- Additional WC
- Kitchenette with coffee machine and kettle
- Walk-in closet with safe
- Balcony with table and chairs 20 m<sup>2</sup>



\*Double occupancy: space for one accompanying person



98 m<sup>2</sup>  
Double occupancy\*  
Lake view



# Medical Suite 07

- **Bedroom**

- Sleeping area with double bed and TV
- Bathroom with bathtub, shower and toilette (barrier-free, with grab rail)
- Shower and care product

- **Living room**

- Living area with large sofa and TV
- Additional WC
- Kitchenette with coffee machine and kettle
- Walk-in closet with safe
- Balcony with table and chairs 20 m<sup>2</sup>



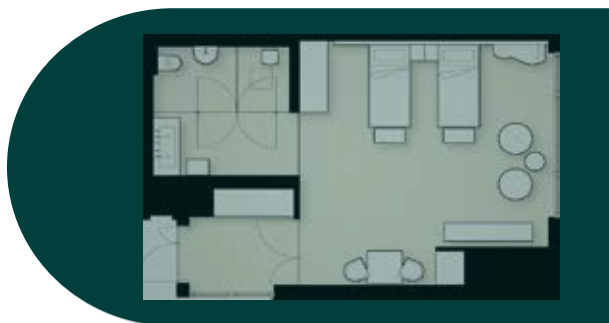
\*Double occupancy: space for one accompanying person

50 m<sup>2</sup>  
Double occupancy\*  
Mountain view  
and lake view



# Medical Junior Suite 08

- Two single beds
- Bathroom with shower and toilette (barrier-free, with grab rail)
- Shower and care products
- Walk-in closet with safe
- Living area with sofa and TV
- Coffee machine and kettle



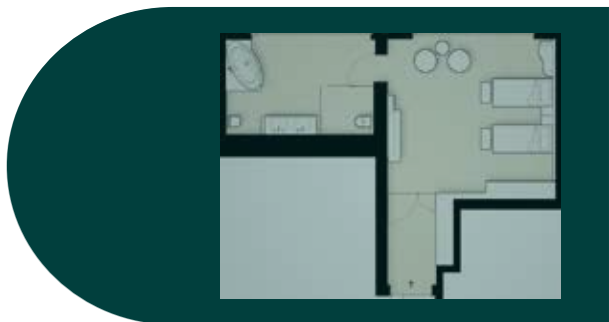
\*Double occupancy: space for one accompanying person

55 m<sup>2</sup>  
Double occupancy\*  
Mountain view



# Medical Junior Suite 09

- Two single beds
- Bathroom with bathtub, shower and toilette (barrier-free, with grab rail)
- Shower and care products
- Walk-in closet with safe
- Living area with sofa and TV
- Coffee machine and kettle



\*Double occupancy: space for one accompanying person

79 m<sup>2</sup>  
Double occupancy\*  
Lake view



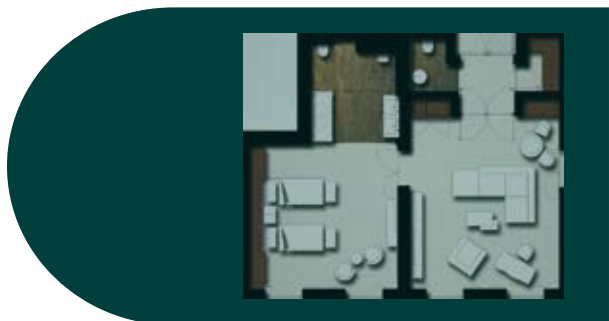
# Medical Residence 105

- **Bedroom**

- Sleeping area with two single beds and TV
- Bathroom with bathtub, shower and toilette (barrier-free, with grab rail)
- Shower and care products

- **Living Room**

- Living area with large sofa and TV
- Additional WC
- Kitchenette with coffee machine and kettle
- Walk-in closet with safe
- Large terrace 47 m<sup>2</sup>



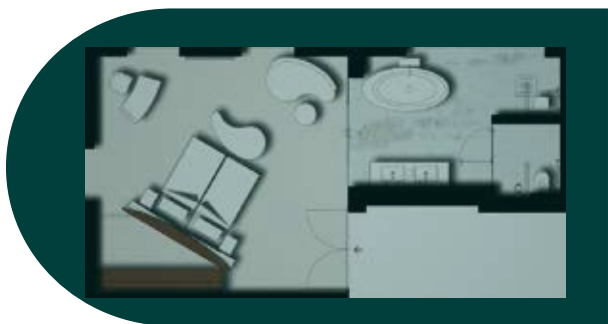
\*Double occupancy: space for one accompanying person

68m<sup>2</sup>  
Double occupancy\*  
Mountain view



# Medical Junior Suite 109

- Two single beds
- Bathroom with bathtub, shower and toilette (barrier-free, with grab rail)
- Shower and care products
- Walk-in closet with safe
- Living area with sofa and TV
- Coffee machine and kettle



\*Double occupancy: space for one accompanying person